

Learn how ERICO can save you time and money with innovative CADDY® products!

What's inside this issue:

New Products	2
CADDY® ROD LOCK	3
CADDY® PYRAMID Rooftop Supports.....	4
An Ideal Solution	5
Tech Corner	6
Other ERICO Products	7
Miscellaneous	8



The TSRBS1625 Telescoping Box Support Receives Prestigious EC&M Product of the Year Award

ERICO's ingenuity garners award! The TSRBS1625 Telescoping Box Support, part of the CADDY® line of fasteners, has been recognized as EC&M Magazine's most innovative product of the year for 2010 in the Fasteners, Hangers and Accessories category. Since 2000, the prestigious EC&M Product of the Year Competition has honored new product development excellence in the electrical industry. The user-friendly features and unique telescoping design of the TSRBS1625 impressed EC&M Magazine's respected panel of judges, awarding ERICO the honor in this specific category.

The TSRBS1625 is ideal for supporting and positioning 4" square and 4-11/16" electrical boxes and mud rings. Boxes can be positioned anywhere inside the opening of the TSRBS1625, and the unique telescoping adjustability allows contractors to use only one part for both 16" and 24" stud spacings (as opposed to multiple parts with competitive products).

For added convenience, boxes can be installed off-site and then are fully adjustable to fit varying stud spaces on-site without having to modify the box location. The TSRBS1625 accommodates up to an 8-gang box in 16" stud spacing or up to a 10-gang box in 24" stud spacing.

The TSRBS1625 is cULus® Listed and unlike competitive products, it features an innovative, one-piece, break-apart design. It can support up to four electrical boxes and is adjustable from 12" to 25".

Contact your local ERICO representative for more information about the award-winning TSRBS1625 Telescoping Box Support.



ERICO Unveils New Products

ERICO is recognized as an industry leader in innovative product development. Our well-known line of CADDY® fasteners has provided electricians and contractors around the world with innovative solutions for supporting conduit, wire and datacom cabling. Here are some of our newest products to hit the market.

CADDY® GLIDER

The CADDY® GLIDER Electrical Box Attachment is designed to simplify the installation of electrical boxes and allows for final adjustment on the jobsite. The CADDY GLIDER easily attaches to any electrical box and is versatile enough to be used in a variety of applications, especially prefabrication where some assembly is done off-site prior to final installation.

With the CADDY GLIDER, installers can attach one or more electrical boxes to the Telescopic Screw Gun Bracket (TSGB). Once attached, the installer can easily adjust the box location and the width of the TSGB between the studs. And, since it is smaller than competitive parts, the CADDY GLIDER allows closer installation of multiple boxes between or against the studs. Up to three boxes can be installed in a standard 16" spacing. Competitive products only allow two.



Far Side Supports

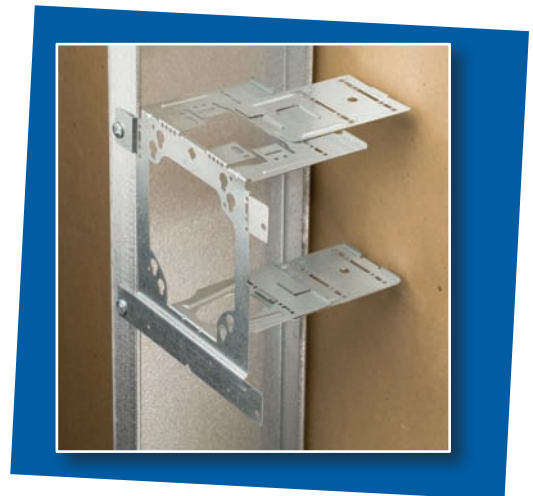
ERICO now offers a wider variety of far side box supports to help prevent damage to electrical boxes and create stability in low-voltage installations.

The 766PM (yellow) and 766PMD (blue) attach directly to any hole of an electrical box to help prevent it from being pushed back from the drywall surface. Both plastic supports are



ideal for use on a 3-5/8" stud wall without adjustment; the 766PM (yellow) is for 1-1/2" deep boxes and the 766PMD (blue) is for 2-1/8" deep boxes. Additionally, both far side supports can be stacked and trimmed to fit installations in 4" or 6" stud depths.

The TEB6XT is designed to prevent electrical boxes and plaster rings from being pushed into the wall. It accommodates wood or metal stud walls that are 6" deep in a variety of electrical or datacom applications. The



TEB6XT attaches without the need for tools to the TEB23 electrical box bracket, allowing any box size or depth to be used. Only one support is needed when the TEB23 is attached to a stud, and two supports can be used when the TEB23 is mounted between studs. This versatile support can also be pre-fabricated to the TEB23 before the box is attached.



New CADDY® Products Simplify a Range of Installations

CADDY® ROD LOCK

CADDY® ROD LOCK is an innovative threaded rod mounting system from ERICO that provides a quick and economical solution for installing electrical and mechanical systems supported by threaded rod. The system includes the CADDY ROD LOCK beam clamp and channel nut.



Beam Clamp

- Works with slightly damaged threads and minor burrs on the threaded rod
- Load capacity up to 500 lbs (3/8" rod) - depending on flange thickness
- UL® 203 & UL 2239 Approved, FM® Approved

With its breakthrough "push-install" design, the CADDY ROD LOCK system helps to reduce the installation time of threaded rod compared to conventional fasteners.



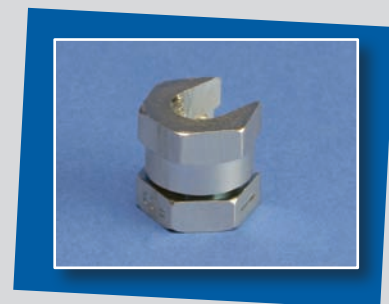
Channel Nut

- Works with slightly damaged threads and minor burrs on the threaded rod
- Reduces installation time
- Load capacity up to 750 lbs (3/8")
- Electro-galvanized ductile iron

SN Series Nut

The SN Series Nut is an easy-to-install solution for supporting loads on threaded rod. It can be positioned instantly on threaded rod at any location, helping to significantly reduce installation time. Simply open the nut and insert it on the threaded rod where needed. Then twist it to close and tighten with a wrench. It's that easy!

Since the SN Series Nut can be added to an existing application, it is ideal for use on a wide variety of retrofit projects, including trapeze installations. It is designed to reduce the need for threading and offers installation time savings compared to standard nuts and washers. The SN Series Nut also provides a load rating stronger than that of the threaded rod itself.



CADDY® PYRAMID Rooftop Supports

ERICO has expanded its highly popular CADDY® PYRAMID line to include three new series of rooftop supports.

CADDY® PYRAMID ST Series Strut-based Thermoplastic Supports

utilize an engineered thermoplastic base with a UV stabilizer. The series is available as a fixed strut support, which provides a fixed-height mounting platform 4" or 6" off the roof surface and 10" or 16" of usable strut length. An adjustable-height strut support is also available, which allows elevation change up to 17" off the roof surface with up to 10" or 16" of usable strut length. This unique feature has received rave reviews from users who require the convenience of quick and easy adjustability.

The CADDY PYRAMID ST Series has a high load rating – up to 1,500 lbs – and provides uniform load distribution to help protect the roof membrane from damage caused by concentrated pressure.



CADDY® PYRAMID EZ Series Adjustable-Height Tool-Free Rooftop Pipe Supports

are manufactured from a durable, UV-stabilized EPDM rubber, the same material as many roof membranes. They feature a simple snap-on installation, which does not require the use of tools or fasteners. The supports are available in multiple models and can easily allow for height adjustment from 1-3/4" to 4", 4" to 6", or 5" to 7". The CADDY PYRAMID EZ Series can also accommodate all pipe and conduit types up to 2" Sch. 40.



CADDY® PYRAMID RL Series Roller-based Thermoplastic Supports

feature a roller capability to allow for longitudinal movement of pipe, such as from thermal expansion or contraction. The supports can accommodate elevation changes on the roof and are designed to keep conduit away from higher ambient temperature, as required by code in many areas.



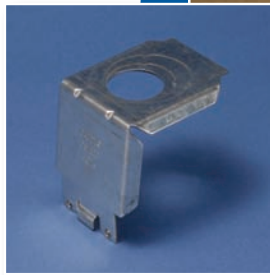
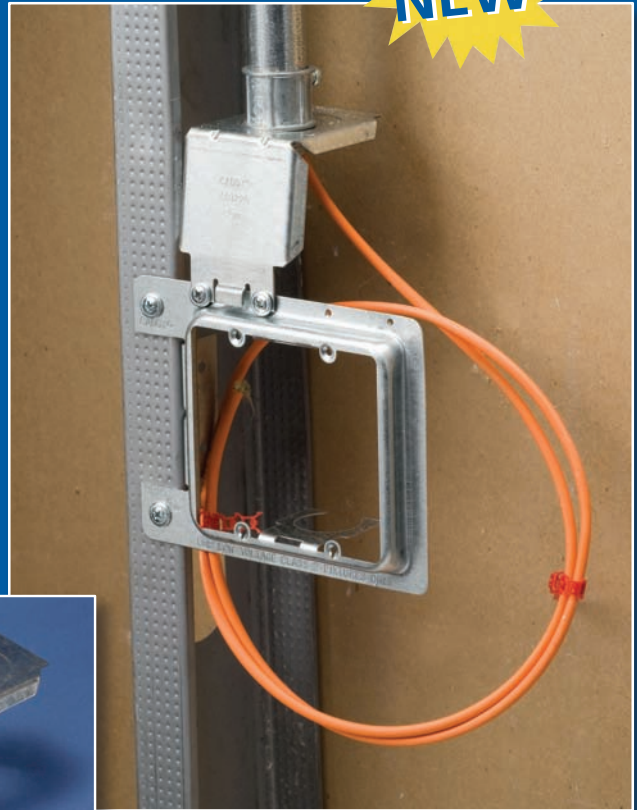
All CADDY PYRAMID products are weatherproof and have passed a variety of rigorous tests, including an extreme temperature test. By utilizing unique materials and finishes, the supports offer superior corrosion protection. Unlike wood blocks, the supports are designed to protect the roof membrane from damage caused by the movement of pipe expansion and contraction.



Box Eliminator Conduit Support (MPCB1220)

This innovative new product is designed to simplify the installation of datacom cables run in conduit. The first product of its kind, the MPCB1220 is designed to maintain the integrity of high-performance cable and help prevent damage, such as kinking, that can occur when an electrical box is used. This support attaches to the MP1S single gang or the MP2S double gang plate mounting bracket and can support 3/4", 1" or 1-1/4" conduit.

When datacom cables are required to be run in conduit, the MPCB1220 eliminates the need for using an electrical box. This provides an easy-to-install method for meeting code in areas where communication cable must be run in conduit and prevents the minimum bend radius for fiber and copper cabling from being exceeded.



PART NUMBER	DESCRIPTION
MP1SCB	Single Gang Box Eliminator Conduit Support Kit (Includes: MP1S, MP1SCB1220 and screws)
MP2SCB	Double Gang Box Eliminator Conduit Support Kit (Includes: MP2S, MP1SCB1220 and screws)
MPCB1220	Box Eliminator Conduit Support (with screws)

Congratulations to ERICO for a Job Well Done!

ERICO was recently presented with the Richard Buzun Award for Leadership and Innovation in eCommerce. This award is given to one manufacturer and one distributor in the electrical industry that demonstrates continued leadership and innovation in e-business and e-commerce. Bob Gaylord, president and CEO of IDEA, announced the winners during the IDEA E-Biz Forum 2010 in Dallas, TX.

ERICO won the manufacturer section for implementing and improving internal and external data quality initiatives, as well as for increasing EDI transactions with partners worldwide. ERICO has also worked with its retail partners to synchronize data through the Global Data Synchronization Network and streamline the exchange of pricing.

The Richard Buzun Award was introduced to the electrical industry in 2007. The award is named after the late Richard Buzun, former IDEA Chairman, and former president and CEO of Siemens Energy & Automation, Inc.

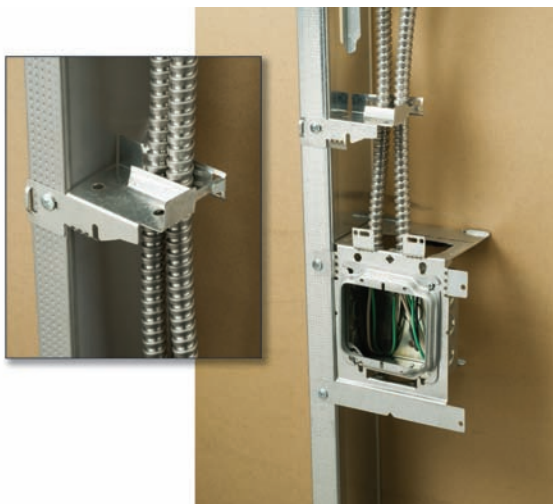


Tech Corner / Contractor Tips

Do you have a question you've been meaning to ask? To help you save time and do your job quicker and easier, we've compiled some commonly asked questions below. But remember, our representatives are always available to answer any additional questions and explain our products and services in greater detail.

Q. Can I use spring steel clips outside?

A. At this time, spring steel clips are rated for indoor use in a non-corrosive environment only.



Q. Can the CER4 Non-Metallic Sheathed Cable and MC/AC Cable Support be mounted on the open side of metal studs?

A. Yes, the CER4 can be mounted on the open side of metal studs, and it can also be inverted for installation on the opposite side of the stud. The CER4 features flared edges to help prevent damage to the cable jacket and a "stop-bend" design, which keeps the cables centered and accounts for overcompensation by preventing them from being pushed too far from the face of the stud.



Q. Are the securing pins on the MP1WWM Within Wall Mounting Plate intended to provide permanent installation?

A. No, the securing pins on the MP1WWM are meant to hold the mounting plate in position until the faceplate is installed.

Q. What is the recommended span when installing non-continuous cable supports?

A. ERICO's non-continuous cable supports, such as CADDY® CAT LINKS, traditional J-Hooks, large-capacity CADDY® CAT CM system, and the adjustable CADDY® CABLECAT system should be installed in accordance with TIA® 569 Section 8.7, which specifies a distance of 5 ft (1.5 m).



Q. Can CADDY® PYRAMID be secured to the rooftop?

A. Yes, CADDY PYRAMID Pipe and Equipment Supports can be secured to the rooftop, but they are designed to simply rest on the roof deck. If you do choose to secure them, it is important that expansion joints be used. CADDY PYRAMID supports dramatically reduce installation time by replacing other labor-intensive support methods, such as using wood blocks, straps and clips.



Keep Yourself Up-to-Date

At ERICO, we continuously strive to provide you with the most valuable product literature and useful resources. If your current copy of the CADDY® Field Catalog (CFC) is getting a little tattered or if you want to make sure you have the most current edition, simply visit: <http://www.erico.com/infoRequest> and search for the **CADDY Electrical and Low Voltage/ Datacomm Fasteners Catalog**. You can also contact your local ERICO distributor or customer service representative to request a new catalog.



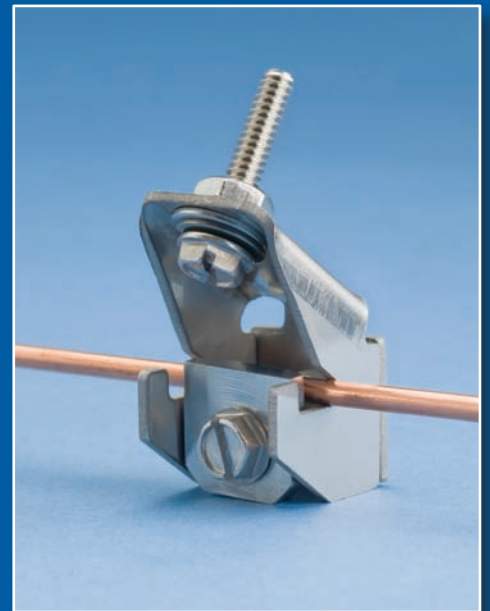
Facility Electrical Protection Products

You're already familiar with ERICO's well-known and trusted line of CADDY® products. But did you know that ERICO offers a wide variety of ERITECH® Facility Electrical Protection products? The ERITECH line includes unique, time-saving and cost-effective products for grounding, bonding and surge/lightning protection applications.

Solar bonding lugs are designed to bond the frames and mounting structures of solar photovoltaic systems in accordance with NEC® requirements. These lugs are corrosion resistant and galvanically compatible with copper grounding conductors and aluminum photovoltaic module frames.

The solar bonding lugs are supplied with the required mounting hardware and are easy to install. The stamped lug has a lay-in feature that allows the positioning of the grounding conductor along multiple frames prior to securing the wire. In addition, the same hex head power driver can be used to install the lug to the frame and secure the wire into the lug.

Stainless steel serrated washers provide a superior bond to anodized aluminum and a lay-in feature is ideal for installation underneath module frames. The lugs can accommodate #14 solid to #6 stranded AWG copper grounding conductors. They are also UL® 467 Listed.



Come Visit Us

NJATC

Ann Arbor, Michigan
July 30-31, 2011



Watch For...



Watch for an update to the
CADDY® STUFF
Contractor Appreciation
Program

UL is a registered trademark of Underwriters Laboratories, Inc.
FM is a registered certification mark of FM Approvals, LLC, LTD.
TIA is a registered service mark of the Telecommunications Industry Association.
NEC is a registered trademark of, and the National Electrical Code (NEC) standard is a copyright of the National Fire Protection Association.

WARNING – ERICO products shall be installed and used only as indicated in ERICO's product instruction sheets and training materials. Instruction sheets are available at www.erico.com and from your ERICO customer service representative. Improper installation, misuse, misapplication or other failure to completely follow ERICO's instructions and warnings may cause product malfunction, property damage, serious bodily injury and death.

Copyright ©2011 ERICO International Corporation. All rights reserved.
CADDY, CADWELD, CRITEC, ERICO, ERIFLEX, ERITECH, and LENTON are registered trademarks of ERICO International Corporation.

ERICO®

CADDY® Fastening Products
34600 Solon Road • Solon, OH 44139