



INSTALLATION INSTRUCTIONS

WELDED WALL BRACKET MODEL #348

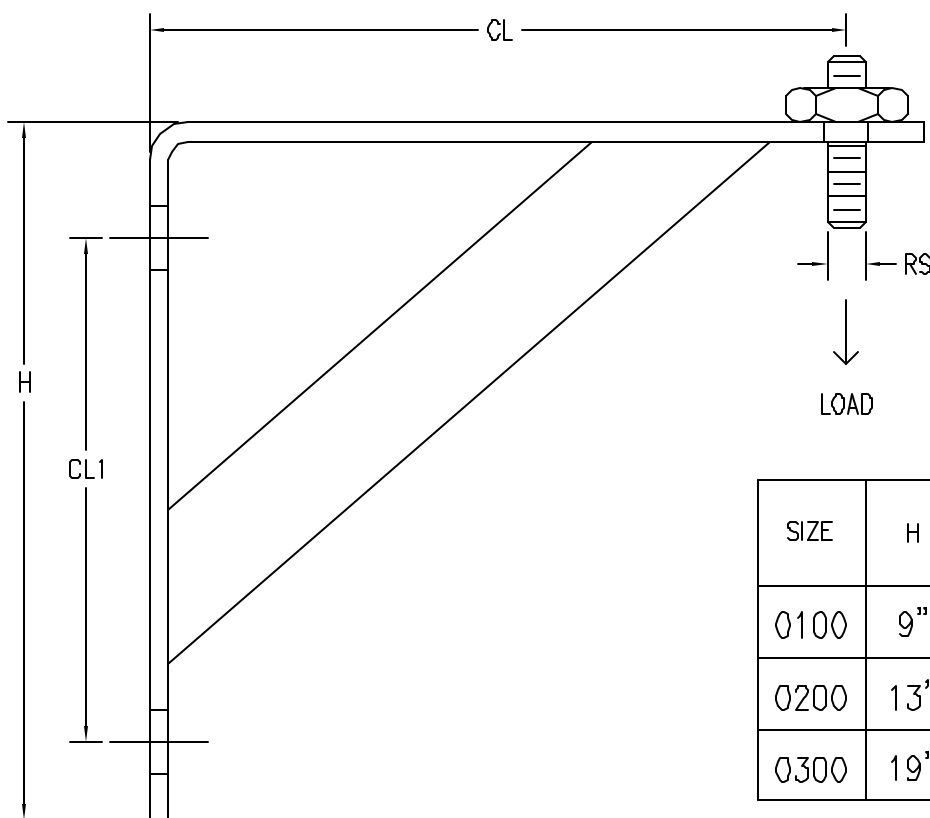
FEATURES/NOTES

This product is used as a wall attachment to suspend static 2" or smaller piping.

NOTE: Follow fastener manufacturer's recommended shear and pull-out strength when fastening to the structure.

Carbon steel wall attachment is available in the following finishes:

Clear zinc chromate, hot dip galvanized, and no finish (plain).



SIZE	H	CL	CL1	MAX. RS
0100	9"	9"	6-1/2"	1/2"
0200	13"	13"	10-1/2"	1/2"
0300	19"	19"	16-1/2"	1/2"

WARNING:

- All pipe supports, hangers, intermediate components and structural attachments must ONLY be used to support pipe, tubing or conduit as stated herein and are NEVER to be used for any other purpose.
- All pipe supports and hangers are designed ONLY for STATIONARY piping unless otherwise noted.
- All supports, hangers, clamps and accessories shown to use two nuts on the hanger rod or a jam nut must have nuts tightened securely to assure proper performance.
- FIRE PROTECTION:** follow requirements of National Fire Protection Assoc. NFPA pamphlets 11, 12, 13, 14, 15, 16, 17, & Factory Mutual Property Loss Prevention Data Sheet No. 2-BN.
- Fasteners must be used only in the manner depicted in the illustrations that accompany it and must not exceed static load ratings.
- Fasteners are designed for use with a variety of industry standard building materials, structural shapes, and mechanical components. For the fastener to work properly, these items must meet the appropriate industry standards. (Examples: ANSI, AISC, AISI)
- The buyer and/or installer is responsible for:
 - Application in conformance to local codes.
 - The integrity of structures to which the fasteners are attached, including their capability of safely accepting the loads imposed, as evaluated by a qualified engineer.
 - Using appropriate industry standard hardware as noted above.
- Failure to observe these specifications may cause product malfunction resulting in property damage or bodily injury. ERICCO Products at the time of shipment are warranted to conform to any applicable written description furnished to the Buyer by ERICCO, and to be free from defects in material and workmanship. NO OTHER WARRANTY, WHETHER EXPRESSED OR IMPLIED, (INCLUDING ANY WARRANTY OF MERCHANTABILITY OR FITNESS), SHALL EXIST IN CONNECTION WITH THE SALE OR USE OF ANY ERICCO PRODUCT.

SAFETY INSTRUCTIONS: All safety regulations required by the job site must be observed. Special attention should be given to the following instructions. While working on the job site:

- Observe all Federal and local safety regulations.
- Wear safety glasses with side shields.
- Be aware of personnel working above and below.
- Wear a hard hat.
- Wear gloves to avoid splinters and cuts.
- When working above ground level, be sure the structure will support your weight.





FEATURES/NOTES

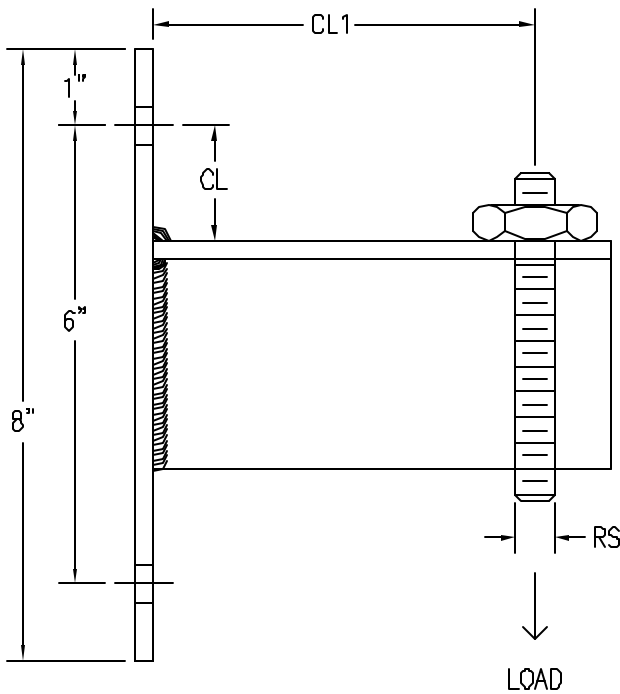
This product is used as a wall attachment to suspend static 2" or smaller piping.

NOTE: Follow fastener manufacturer's recommended shear and pull-out strength when fastening to the structure.

Carbon steel wall attachment is available in the following finishes:
 Clear zinc chromate, hot dip galvanized, and no finish (plain).

INSTALLATION INSTRUCTIONS

CANTILEVER
 WALL BRACKET
 MODEL #349



SIZE	CL1	CL	MAX. RS
0100	4"	2"	1/2"
0200	6"	1-3/4"	1/2"
0300	8"	1-1/2"	1/2"

WARNING:

- All pipe supports, hangers, intermediate components and structural attachments must ONLY be used to support pipe, tubing or conduit as stated herein and are NEVER to be used for any other purpose.
- All pipe supports and hangers are designed ONLY for STATIONARY piping unless otherwise noted.
- All supports, hangers, clamps and accessories shown to use two nuts on the hanger rod or a jam nut must have nuts tightened securely to assure proper performance.
- FIRE PROTECTION:** follow requirements of National Fire Protection Assoc. NFPA pamphlets 11, 12, 13, 14, 15, 16, 17, & Factory Mutual Property Loss Prevention Data Sheet No. 2-8N.
- Fasteners must be used only in the manner depicted in the illustrations that accompany it and must not exceed static load ratings.
- Fasteners are designed for use with a variety of industry standard building materials, structural shapes, and mechanical components. For the fastener to work properly, these items must meet the appropriate industry standards. (Examples: ANSI, ASC, AISI)
- The buyer and/or installer is responsible for:
 - Application in conformance to local codes.
 - The integrity of structures to which the fasteners are attached, including their capability of safely accepting the loads imposed, as evaluated by a qualified engineer.
 - Using appropriate industry standard hardware as noted above.
- Failure to observe these specifications may cause product malfunction resulting in property damage or bodily injury. ERICCO Products at the time of shipment are warranted to conform to any applicable written description furnished to the Buyer by ERICCO, and to be free from defects in material and workmanship. NO OTHER WARRANTY, WHETHER EXPRESSED OR IMPLIED, (INCLUDING ANY WARRANTY OF MERCHANTABILITY OR FITNESS), SHALL EXIST IN CONNECTION WITH THE SALE OR USE OF ANY ERICCO PRODUCT.

SAFETY INSTRUCTIONS: All safety regulations required by the job site must be observed. Special attention should be given to the following instructions. While working on or on the job site:

- Observe all Federal and local safety regulations.
- Wear safety glasses with side shields.
- Be aware of personnel working above and below.
- Wear a hard hat.
- Wear gloves to avoid splinters and cuts.
- When working above ground level, be sure the structure will support your weight.

