

# Stud Wall

## Low Voltage Mounting Bracket For New Construction

### Features

- Provides a bracket for mounting low voltage Class 2 communication outlets
- Reduces bulges in the dry wall caused by plaster rings
- May be installed to the front or the side of the metal or wood stud
- Side support provides for a rigid installation
- Attaches with self-tapping screws or nails
- Works with 1/2" and 5/8" dry wall
- Works with wood or metal studs

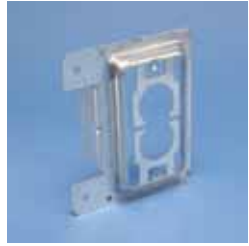


Fig. #1



Fig. #2

**Notes:** No Load Rating - Positioning Only

Part Number	Fig. #	Description	Standard Packaging Quantity
MP1S	1	Single gang plate mounting bracket for new work	25
MP2S	2	Double gang plate mounting bracket for new work	25

