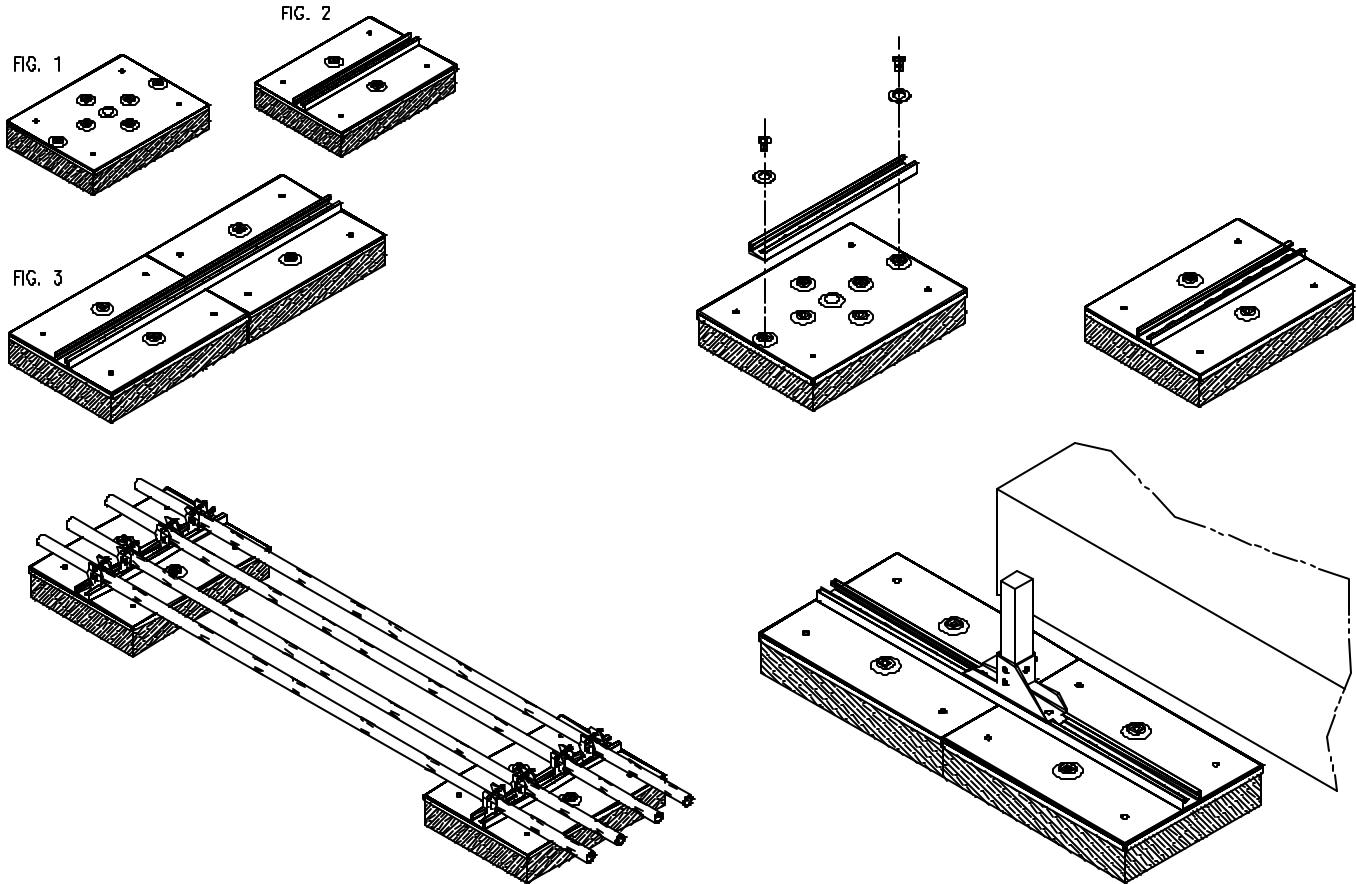


CADDY[®] PYRAMID 150 CADDY[®] PYRAMID 300 CADDY[®] PYRAMID 600 PIPE AND EQUIPMENT SUPPORTS

US PART NO.	EUROPE PART NO.	FIG.	DESCRIPTION	MAX LOAD	
				LBS	KG
RPS150T1	182560	1	16"x12"x3-3/16", EG FINISH, 3/8" THREAD	150	68
RPS150T2	182570	2	16"x12"x4", EG FINISH, 3/8" THREAD	150	68
RPS150T3	182580	1	16"x12"x3-3/16", HD FINISH, M10 THREAD	150	68
RPS150T4	182590	2	16"x12"x4", HD FINISH, M10 THREAD	150	68
RPS300T1	182600	1	16"x12"x3-3/16", EG FINISH, 3/8" THREAD	300	135
RPS300T2	182610	2	16"x12"x4", EG FINISH, 3/8" THREAD	300	135
RPS300T3	182620	1	16"x12"x3-3/16", HD FINISH, M10 THREAD	300	135
RPS300T4	182630	2	16"x12"x4", HD FINISH, M10 THREAD	300	135
RPS600T2	182640	3	32"x12"x4", EG FINISH, 3/8" THREAD	600	270
RPS600T4	182650	3	32"x12"x4", HD FINISH, M10 THREAD	600	270



WARNING

1. ERICO products shall be installed and used only as indicated in ERICO product instruction sheets and training materials. Instruction sheets are available at www.erico.com and from your ERICO customer service representative.
2. ERICO products must never be used for a purpose other than the purpose for which they were designed or in a manner that exceeds specified load ratings.
3. All instructions must be completely followed to ensure proper and safe installation and performance.
4. Improper installation, misuse, misapplication or other failure to completely follow ERICO's instructions and warnings may cause product malfunction, property damage, serious bodily injury and death.
5. Products that are manufactured using spring steel components shall be used only in a non-corrosive indoor environment.
6. All pipe supports, hangers, intermediate components and structural attachments must ONLY be used as described herein and are NEVER to be used for any other purpose.

NOTE: All load ratings are for static conditions and do not account for dynamic loading such as wind, water or seismic loads, unless otherwise noted.

The customer is responsible for:

- a. Conformance to all governing codes.
- b. The integrity of structures to which the products are attached, including their capability of safely accepting the loads imposed, as evaluated by a qualified engineer.
- c. Using appropriate industry standard hardware as noted above.

SAFETY INSTRUCTIONS: All governing codes and regulations and those required by the job site must be observed. Always use appropriate safety equipment such as eye protection, hard hat, and gloves as appropriate to the application.

CADDY, CADWELD, CRITEC, ERICO, ERIFLEX, ERITECH and LENTON are registered trademarks of ERICO International Corporation.

