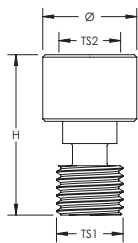


Early Streamer Emission Terminal to ER-Series Mast Adaptor



- INTCPTSIIER1 connects nVent ERICO System 1000 air terminals to ER stainless steel upper mast sections
- INTCPTSIIER2 connects nVent ERICO System 1000 air terminals to ER stainless steel middle mast sections



Material: Stainless Steel 304 (EN 1.4301)

Part Number	Thread Size 1 TS1	Thread Size 2 TS2	Diameter Ø	Height H	Unit Weight
INTCPTSIIER1	3/4 UNC	M25	1 1/2"	2.56"	0.533 lb
INTCPTSIIER2	1 1/16 UNC	M25	1 1/2"	2.56"	0.629 lb

WARNING

nVent products shall be installed and used only as indicated in nVent's product instruction sheets and training materials. Instruction sheets are available at www.erico.com and from your nVent customer service representative. Improper installation, misuse, misapplication or other failure to completely follow nVent's instructions and warnings may cause product malfunction, property damage, serious bodily injury and death and/or void your warranty.

© 2019 nVent All rights reserved

nVent, nVent CADDY, nVent ERICO, nVent ERIFLEX and nVent LENTON are owned by nVent or its global affiliates.

All other trademarks are the property of their respective owners. nVent reserves the right to change specifications without prior notice.