

NVENT CADDY PREFAB SOLUTIONS QUICK-SHIP ASSEMBLIES

FEATURES

- Helps eliminate on-site material handling costs
- Quick-Ship assemblies help keep projects on schedule
- Customized to your specific project
- Properly allocate labor hours to critical parts of your project
- Minimize excess packaging waste
- Improved quality from assembly in a controlled manufacturing environment
- Quoted within 48 hours of request.
- Shipped within three business days, after receipt and acceptance of order*
- UL listed assemblies



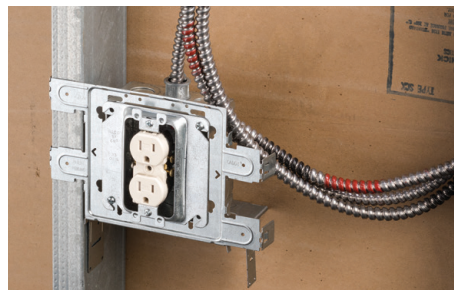
* Subject to wiring device availability

Material handling consumes as much as 40% of labor costs – this excludes overhead costs associated with frequent component orders. Prefab Solutions Quick-Ship Assemblies help eliminate material handling costs by delivering complete assemblies. Built to your exact specifications with minimal lead-time and delivered just-in-time direct to your job-site.

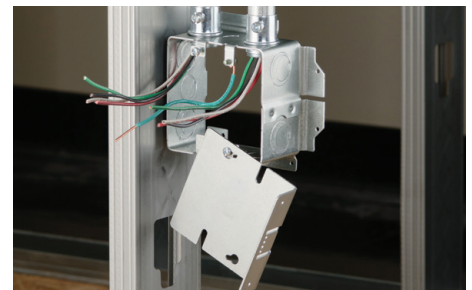
Assemblies are available for all system types; e.g. wiring devices, telecom, fire alarm, light fixtures, paddle fans, and all other special systems.

Select any nVent CADDY mounted bracket, such as:

nVent CADDY ALL-IN-ONE, STS2346, C23, RBS16, RBS24, TSG1624, TSRBS1625, TSG1DR, FMBS1624



If applicable, select any wiring device from any manufacturer.



Select any junction box:

- 4 sq., 4 sq. deep, 4-11/16, 5 sq.
- Open-back configuration or standard
- 3- or 4-gang available



Select plaster ring type:

- Adjustable
- Single-, double-, or multiple-gang
- 1/2", 5/8", 3/4", 1", 1-1/4", 1-1/2 or 2" deep



Optional: Specify cable type and length for each assembly

- MC-Cable
 - AC-Cable
 - HFC-Cable
 - NM-Cable
- Steel or aluminum jacket,
Solid or stranded conductors,
Standard or MCI-A type

HOW TO REQUEST A QUOTE:

Provide the information below to your local nVent CADDY representative.

- List of local representatives can be found at nVent.com/CADDY
- Pictures and drawings of requirements can be attached

| Component | Specifics | Optional: Sketch your assembly |
|---------------------------------------|--|--------------------------------|
| nVent CADDY Fastener | | |
| Device Brand | | |
| Device Type | | |
| Device Grade | | |
| Electrical Box Type | Size (4", 4-11/16") KO (1/2", combo) | |
| Open Back ? | | |
| Mud Ring Depth | | |
| Cable Type | | |
| Cable Length | | |
| Connectors | | |
| Quantity of Assemblies Required | | |
| Other Options ? | | |

(Please make copies of this form for additional assembly requirements)

Please have a Quick-Ship Assembly sales engineer contact me

Name: _____

Phone: (_____) _____



Our powerful portfolio of brands:

CADDY ERICO HOFFMAN RAYCHEM SCHROFF TRACER

WARNING: nVent products shall be installed and used only as indicated in nVent product instruction sheets and training materials. Instruction sheets are available at nVent.com/CADDY and from your nVent customer service representative. Improper installation, misuse, misapplication or other failure to completely follow nVent instructions and warnings may cause product malfunction, property damage, serious bodily injury and death and/or void your warranty.

©2018 nVent. All nVent marks and logos are owned or licensed by nVent Services GmbH or its affiliates. All other trademarks are the property of their respective owners. nVent reserves the right to change specifications without notice.

CADDY-DS-F1293S-F153LT17NAEN-EN-1805