

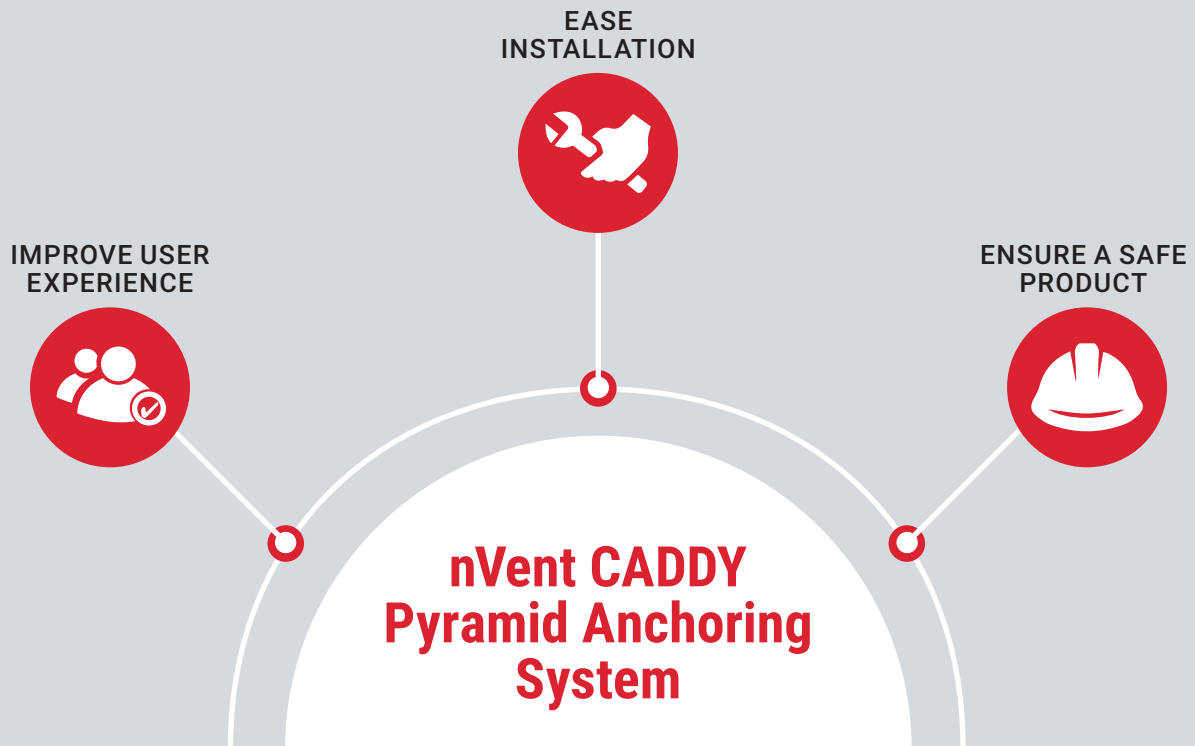
CONNECT AND PROTECT

nVent CADDY Pyramid Anchoring System



CADDY

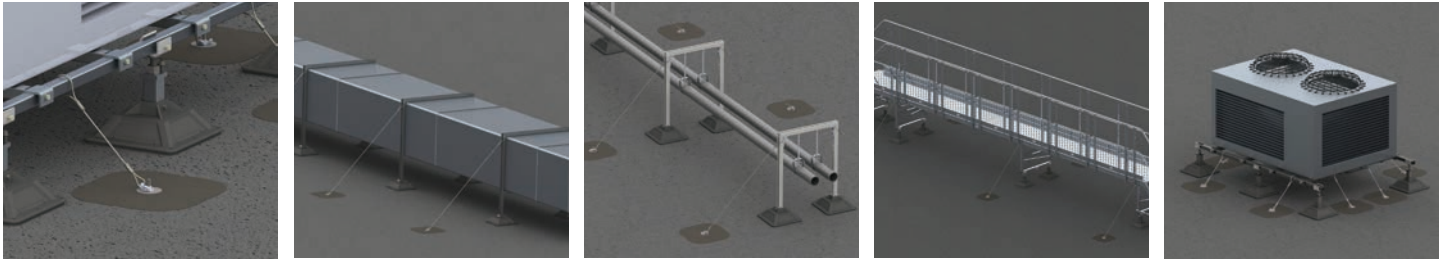
Rooftop Anchoring



As a whole, the nVent CADDY Pyramid Anchoring System is comprised of four elements:

1. **nVent CADDY Pyramid Anchors** are designed to be the best in the market. The unique membrane sealing process allows for exact material matching to the original membrane, preserving the manufacturer's warranty when installed by certified personnel. The process is also significantly easier to install, especially compared to ballasting, which is labor intensive. The membrane patch attaches directly to the existing membrane and only requires simple, common tools.
2. **nVent CADDY Pyramid Rooftop Supports** provide additional value by offering complementary products for rooftop installations. Pyramid rooftop supports are a surface mounted solution for supporting electrical and mechanical applications, including equipment, on a variety of roof surfaces. Pyramid supports offer the advantages of superior load distribution and load capacity. The interior of the product is engineered for even pressure on rooftop surfaces, limiting damage and maintaining membrane warranties. Foam and rubber versions are available.
3. **Engineering support** ensures the installation meets required safety standards. nVent CADDY offers design and layout services that can provide a PE stamp across the United States. This eliminates the need to hire a separate engineer, simplifying the design process. nVent CADDY rooftop anchors can be secured with minimal intrusion and the resealing process prevents water intrusion and matches the warranty of the existing membrane. Additionally, nVent CADDY offers a full range of rooftop supports and cable braces for a complete rooftop installation.
4. **nVent CADDY bracing products** also offer a full range of highly adaptable bracing services to a rooftop. Cable is available in stainless steel for superior corrosion resistance.

nVent CADDY Pyramid Rooftop Anchor System



nVent CADDY Pyramid Rooftop Anchor Systems help ensure the safety and protection of your rooftop mechanical and electrical equipment applications. The system fastens directly to the roof deck. The anchor is permanently sealed to the roof membrane, creating a watertight barrier. The system offers a superior method of securing rooftop equipment by replacing evasive anchoring techniques and ballasting. Pyramid Rooftop Anchor Systems provide contractors with high-quality products and engineering services.

FEATURES

- System requires minimal roof membrane penetration
- Elimination of ballasting significantly reduces weight to roof structure
- Speed of installation results in lower total installed cost
- System preserves membrane manufacturers' warranty
- Design and engineering services are available, from simple layouts to PE stamped designs
- Combines with other Pyramid products for a total rooftop solution



nVent CADDY Pyramid Rooftop Anchor

This watertight, membrane-matching rooftop anchor utilizes a threaded stud for bracing applications.



nVent CADDY Pyramid Rooftop Anchor Cable Bracing

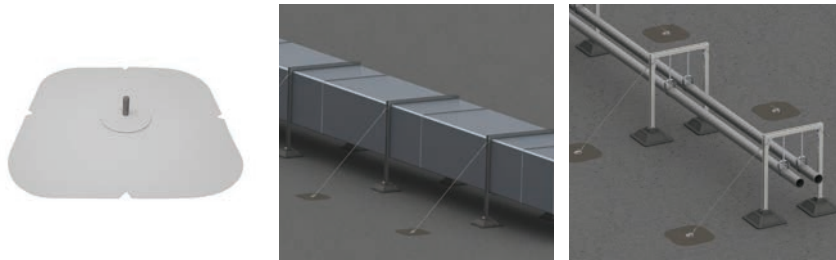
A safe and secure method to attach electrical and mechanical applications to rooftop anchors.



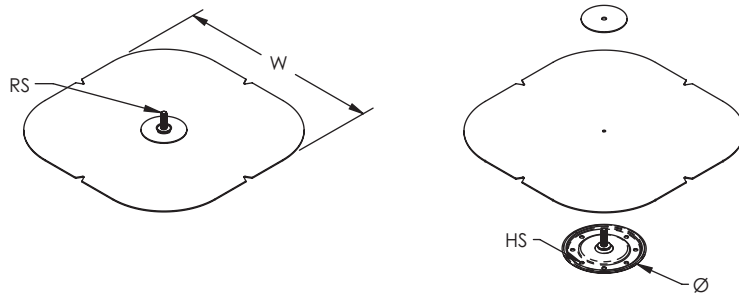
nVent CADDY Pyramid Rooftop Anchor System Accessories

Accessories for nVent CADDY Pyramid Rooftop Anchor System.

nVent CADDY Pyramid Rooftop Anchor



nVent CADDY Pyramid Rooftop Anchors provide an ideal method of installing rooftop anchor points for bracing applications. The installation provides a watertight membrane seal to the roof deck. Superior membrane protection compared to other evasive anchoring and ballasting techniques that can void warranties. The anchors come in TPO, PVC and EPDM single ply materials, along with modified asphalt surface.



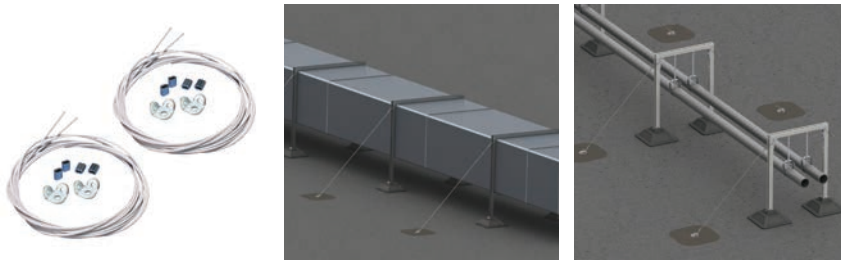
FEATURES

- Anchors require minimal roof membrane penetration
- System preserves membrane manufacturers' warranty
- Matching membrane material allows for consistent performance and aesthetic
- Installation creates a watertight seal, eliminating water intrusion and damage to the structure

Part Number	Membrane Manufacturer	Color	Rod Size RS	Diameter Ø	Hole Size HS	Width W
Material: EPDM-SBR Rubber						
CRAU24EB1C	CARLISLE®	Black	3/8"	5 1/2"	0.275"	11 3/4"
Material: Modified Asphalt						
CRAU26SW12C	CERTAINTeed®	-	3/8"	5 1/2"	0.275"	18"
Material: Polyvinylchloride						
CRAU24PW3J	JOHNS MANVILLE®	White	3/8"	5 1/2"	0.275"	11 3/4"
CRAU24PW8S	SIKA SARNAFIL®	White	3/8"	5 1/2"	0.275"	11 3/4"
Material: Thermoplastic Polyolefin (TPO)						
CRAU24TW1C	CARLISLE®	White	3/8"	5 1/2"	0.275"	11 3/4"
CRAU24TW2F	FIRESTONE®	White	3/8"	5 1/2"	0.275"	11 3/4"
CRAU24TW3J	JOHNS MANVILLE®	White	3/8"	5 1/2"	0.275"	11 3/4"
CRAU24TW4G	GAF®	White	3/8"	5 1/2"	0.275"	11 3/4"

Anchor system must be installed by a certified roofing contractor according to membrane manufacturer's guidelines to preserve membrane warranty.

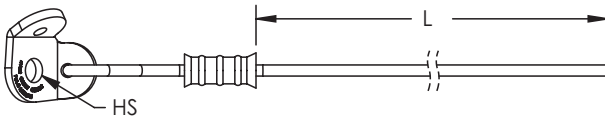
nVent CADDY Pyramid Rooftop Anchor Cable Bracing



nVent CADDY Pyramid Rooftop Cable Bracing provides a safe and secure method to attach electrical and mechanical applications to rooftop anchors. Ideal alternative to rigid bracing for rooftop applications, the system includes stainless steel cable, attachment fittings, crimping sleeves and related tools.

FEATURES

- Stainless steel components of cable assembly provides superior corrosion performance
- Multiple length configurations provide flexibility for various installations
- Pre-assembled cable terminations enable easy installation



Material: **Stainless Steel 316 (EN 1.4401)**

Part Number	Brace Size	Length L	Hole Size HS
CRA36SS38L2	#36	6.6'	7/16"
CRA36SS38L3	#36	9.8'	7/16"
CRA36SS38L4	#36	13.1'	7/16"

Deck Screw



FEATURES

- Secures nVent CADDY Pyramid Rooftop Anchors to various roof substrate materials

Material: **Steel**
Finish: **Epoxy Coated**
Color: **Black**

Part Number	Screw Diameter	Screw Length
A927W001P100	#14	2"
A927W002P100	#14	3"
A927W003P100	#14	4"
A927W004P100	#14	5"
A927W005P100	#14	6"
A927W006P100	#14	7"
A927W007P100	#14	8"
A927W008P100	#15	2"
A927W009P100	#15	3"
A927W010P100	#15	4"
A927W011P100	#15	5"
A927W012P100	#15	6"
A927W013P100	#15	7"
A927W014P100	#15	8"

#14 deck screws are for general purpose use.

#15 deck screws are specially suited for OSB and light guage steel.

nVent CADDY Pyramid Rooftop Systems



nVent CADDY Pyramid rooftop supports are a surface mounted solution for supporting electrical and mechanical applications on a variety of roof surfaces. They offer superior load capacity and dramatically reduce installation time by replacing slow, heavy and labor-intensive methods for support of pipe, conduit, duct, cable tray and equipment. Unlike wood blocks, nVent CADDY Pyramid supports are specifically designed for rooftop applications, incorporating unique materials and finishes that protect roof membranes and provide superior corrosion protection.



nVent CADDY Pyramid ST Strut-Based Supports

A strut-based support utilizing an engineered thermoplastic base with a UV stabilizer. Offers excellent load distribution with high load ratings.



nVent CADDY Pyramid RL Roller-Based Supports

A polymeric roller-based support that helps ensure long-lasting performance and smooth roller actions. Provides superior durability for rooftop environments.



nVent CADDY Pyramid H-Frame

A fast and economical solution that keeps installation costs low and allows flexibility in fabricating the H-frame on site.



nVent CADDY Pyramid Equipment Supports

A fast, flexible and innovative system for supporting heavy-duty mechanical services on rooftop surfaces.



nVent CADDY Pyramid Crossovers and Walkways

Complete portfolio of walkways, ladders, towers, bridges, and platforms for constructing a rooftop pathway.



nVent CADDY Pyramid 50 Foam-Based Support

The original nVent CADDY Pyramid design provides lightweight support with roof-friendly materials.



nVent CADDY Pyramid Tool-Free Supports

Provides a fixed-height mounting platform 4" (102 mm) off the roof surface with 5.5", 10" or 16" (140 mm, 254 mm, or 406 mm) lengths with included push down tool-free fasteners.



nVent CADDY Pyramid Universal Support

Provides a fixed-height mounting platform 4" (102 mm) off the roof surface with 5.5", 10" or 16" (140 mm, 254 mm, or 406 mm) lengths with captive stainless steel nuts to accommodate custom applications.



nVent CADDY Pyramid EZ Rubber-Based Supports

EPDM rubber-based and height-adjustable. Requires no tools or fittings, making installations easier than ever.



nVent CADDY Pyramid 25 Pipe and Conduit Support, Plastic

Lightweight rooftop support requiring no tools or fittings making installations quick and easy.

Our powerful portfolio of brands:

CADDY

ERICO

HOFFMAN

RAYCHEM

SCHROFF

TRACER



[nVent.com/CADDY](https://www.nVent.com/CADDY)

WARNING: nVent products shall be installed and used only as indicated in nVent's product instruction sheets and training materials. Instruction sheets are available at [nVent.com/CADDY](https://www.nVent.com/CADDY) and from your nVent customer service representative. Improper installation, misuse, misapplication or other failure to completely follow nVent's instructions and warnings may cause product malfunction, property damage, serious bodily injury and death and/or void your warranty.

©2019 nVent. All nVent marks and logos are owned or licensed by nVent Services GmbH or its affiliates. All other trademarks are the property of their respective owners. nVent reserves the right to change specifications without notice. CADDY-SB-H84615-PyramidAnchor-USEN-1901