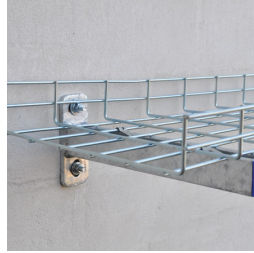
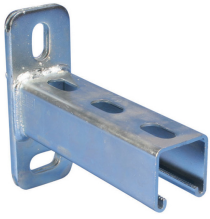
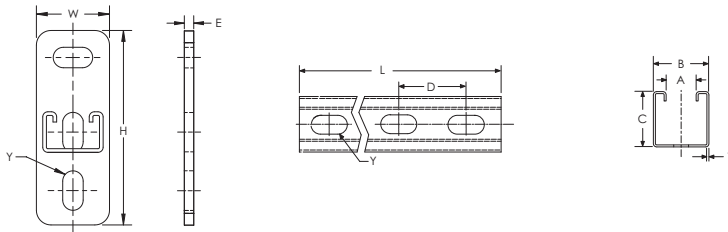


Strut Cantilever Arm Type A, Slotted – KA25H0300EG



- Slotted channel
- Welded on flat mounting plate



Part Number	KA25H0300EG
Material	Steel
Finish	Electrogalvanized
Length (L)	11 7/8"
Height (H)	5 1/4"
Width (W)	2"
A	7/8"
B	1 5/8"
C	1 5/8"
D	2"
E	5/16"
Y	9/16" x 1 1/16"
Thickness (T)	0.098"
Certifications	ITB
Standard Packaging Quantity	10 pc
UPC	78285684846
EAN-13	8711893027198

WARNING

nVent products shall be installed and used only as indicated in nVent's product instruction sheets and training materials. Instruction sheets are available at www.erico.com and from your nVent customer service representative. Improper installation, misuse, misapplication or other failure to completely follow nVent's instructions and warnings may cause product malfunction, property damage, serious bodily injury and death and/or void your warranty.

© 2021 nVent All rights reserved

nVent, nVent CADDY, nVent ERICO, nVent ERIFLEX and nVent LENTON are owned by nVent or its global affiliates.

All other trademarks are the property of their respective owners. nVent reserves the right to change specifications without prior notice.

